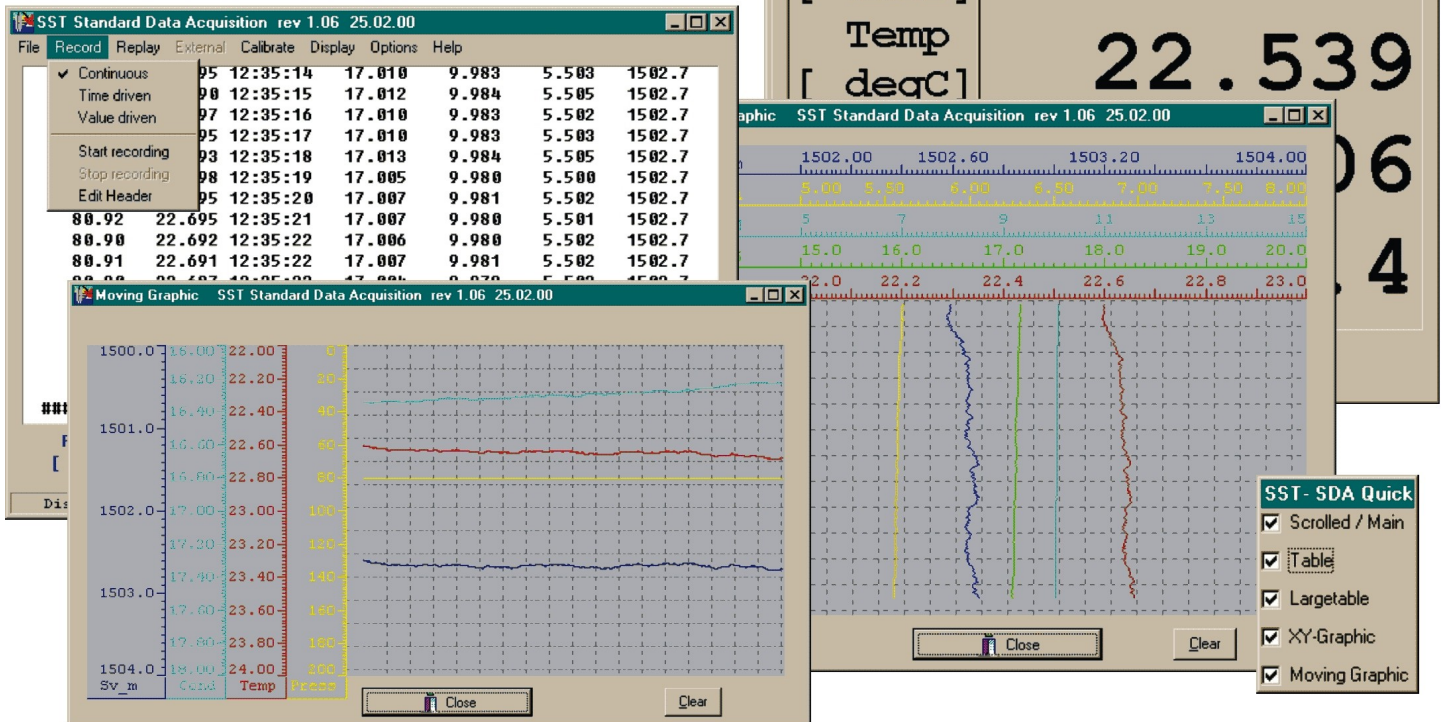


Sea & Sun Technology's Standard Data Acquisition Software

for all Windows® 95, 98 up to XP



Supported Probes

Oceanographic and Limnologic probes from:

- ADM - Analoge Digitale Meßsysteme
- ASD-Sensortechnik
- ME - Meerestechnik Elektronik
- Sea-Bird Electronics
- Sea & Sun Technology
- Trios, CAPSUM, DataDis
- ...and probes and devices from other vendors that are compatible to any of these

also supported are :

- (D)GPS navigation receivers with NMEA183 (any vendor)
- Echo-sounders / Fish-finders with NMEA183 (any vendor)
- PAAR thermometers (Merz GmbH)
- ParoScientific Pressure Gauges
- Hydro-Bios Carousel Water-samplers
- ADM BIO-FISH (incl. Remote Control)

Supports up to **8 probes** simultaneously on **COM1: to COMxx:** including **PCMCIA** cards and **USB-serial converters**

Language

Menu and dialog language can be localized, currently English and German are available. User can build additional language files for his preferred language.

Display of Data

3 different types of text windows and 2 graphic windows:

- **Scrolled** text (smooth scroll)
- **Table** text (all information of a sensor in one line)
- **Large Table** text (large letters to be viewed from a distance)
- **XY - Graphic** (with semi-automatic axis-scalation)
(electronic sea-charts may be used as background for GPS navigation)
- **Moving Graphic** (simulation of a chart recorder)

All windows are scalable and may be open and active at the same time

Virtually unlimited number of sensors displayed in each window

Configuration of text- and graphic windows by intuitive context sensitive dialogs

Configurations can be stored and reloaded at any time in project files

Storage of Data

- Storage of data to disk in space-saving binary format (well documented)
- 3 modes for logging:
 - **Continuous** (all data received)
 - **Time** dependant (several schemes with/without averaging)
 - **Value** dependant (pressure profiles etc.)
- Header-Comment stores information about environment or events
- Conversion of binary raw data files to ASCII - files (EXCEL® compatible-format) for further evaluation
- Optional Data evaluation software package available for in-depth validation, filtering and calculation.

Help-system

- Online Help contains complete manual
- Context sensitive help via the F1 key (Function key #1) at any time

PC / OS Requirements

- Moderate PC-hardware requirements : Pentium-class PC or Laptop
- Runs on WIN95 and newer, WIN NT and newer up to XP
- True 32bit Windows(TM) application, needs no special drivers nor DLL's !
- Easy to use, only basic knowledge of Windows necessary
- Small footprint: program-, configuration- and help-files use less than 3 megabytes on hard-disk !

Sea & Sun Technology GmbH

Erfurter Str. 2, D-24610 Trappenkamp
Germany
Tel.: 0049 (0) 4323-910913
Fax: 0049 (0) 4323-910915
e-mail: email@Sea-Sun-Tech.com
internet: http://www.Sea-Sun-Tech.com

Network

- Online probe data can be distributed to one or more clients via TCP/IP-network. SDA can be used as server or client or both.

Option pack: Memory Probes

Comfortable configuration and readout of Memory-Probes from several vendors integrated into unified user interface :

- **ADM - Analoge Digitale Meßsysteme**
- **ME - Meerestechnik Elektronik**
- **Sea-Bird Electronics**
- **Sea & Sun Technology**

Additional features

- Online printing for protocols
- Offline printing of graphic windows and scrolled windows
- Offline hardcopy to *.BMP graphic files
- Field calibration for some sensor types
- Air pressure compensation
- Import of data files and configuration files from several ancient DOS-programs.

The number of supported vendors and probes is constantly increasing, ask for details. We aim to include any probes (and devices) of interest to our customers into the scope of this program.

Our target is to produce a true cross-vendor data acquisition program for the oceanographic and limnologic public to overcome the legacies of programs that only support one probe from only one vendor !

All trademarks mentioned are property of their respective owners.

Distributed by: